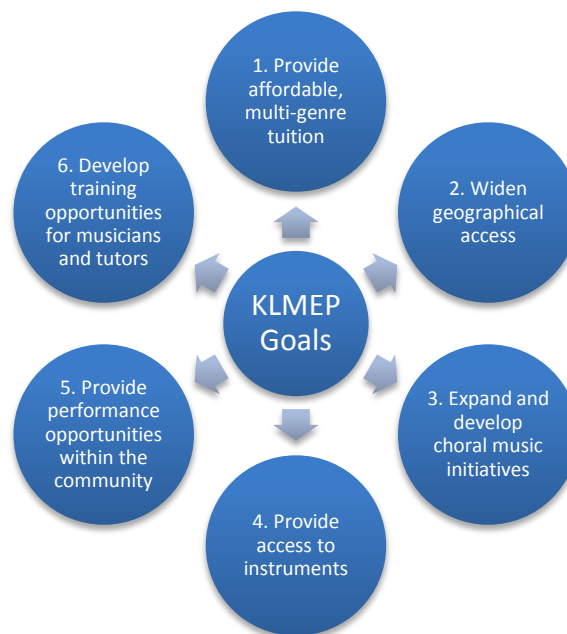


Music Generation Kerry Summary Framework Plan

- **Six primary goals** reflect the objectives of Kerry Local Music Education Partnership (KLMEP) in meeting the identified local needs in respect of the provision of music education in Co Kerry. The goals aim to address geographical access, improve genre choices, expand and develop choral initiatives, provide access to instruments, improve opportunities for performances within communities and improve employment, training and professional development opportunities for musicians and tutors.



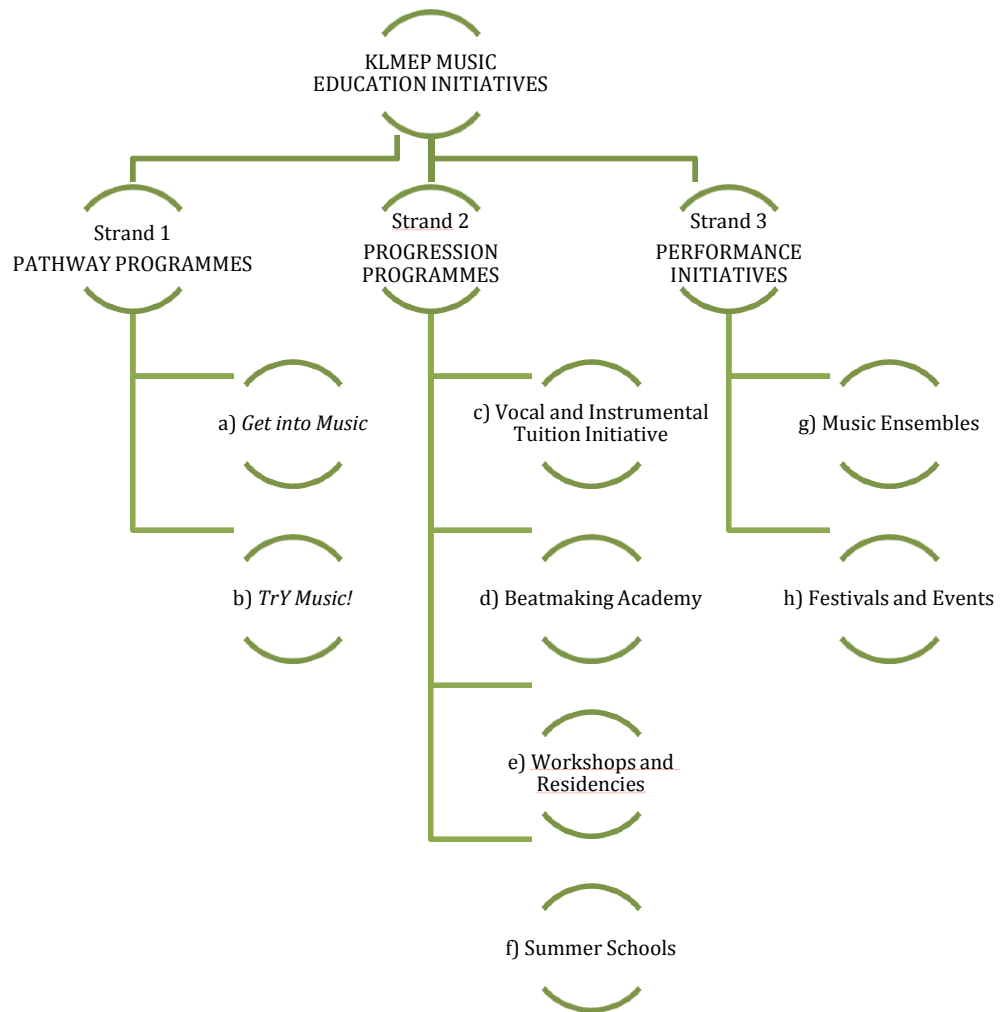
The table below outlines how KLMEP's planned Project Strands, Resources and Supports strategically meet KLMEP's primary goals. By 2021, it is expected that access to music education services in Co. Kerry will be provided as part of a new partnership ecosystem where musicians, educators and funding partners work together with children and young people to provide them with the opportunity to confidently participate in the diverse, social, cultural, creative and musical landscape of Co. Kerry.

Strategic mapping of planned initiatives to KLMEP goals

KLMEP Goals	Programme Deliverables 2017-2021
1. Provide affordable, multi-genre tuition	<p>Strand 1 Pathway Programmes (a) <i>Get into Music</i> (b) <i>TrY Music!</i></p> <p>Strand 2 Progression Programmes (c) Vocal and Instrumental Tuition Initiative (d) Beatmaking Academy (e) Workshops and Residencies (f) Summer Schools</p> <p>Strand 3 Performance Initiatives (g) Music Ensembles (h) Festivals and Events</p>
2. Widen geographical access	<p>Resources and Supports Tuition Hubs and Venues Electronic Resources</p>
3. Expand and develop choral music initiatives	<p>Strand 2 Progression Programmes (c) Vocal and Instrumental Tuition Initiative (e) Workshops and Residencies</p> <p>Strand 3 Performance Initiatives (g) Music Ensembles (h) Festivals and Events</p>
4. Provide access to instruments	<p>Resources and Supports Instrument Banks</p>
5. Provide performance opportunities within the community	<p>Strand 3 Performance Initiatives (g) Music Ensembles (h) Festivals and Residencies</p>
6. Develop training opportunities for musicians and tutors	<p>Resources and Supports Teaching and Learning Forums Continuing Professional Development</p>

Programme strands to deliver on these goals:

- An overview of the proposed Music Education Strands of Kerry Local Music Education Partnership are below. Strands include *Pathway* programmes, *Progression* programmes and *Performance* initiatives.



Strand 1: Pathway Programmes

Introductory access programmes will be delivered as part of the Kerry Local Music Education Partnership project. The programmes will provide opportunities for children and young people to try-out instruments, create and perform new music and gain insight and expertise from experienced musicians and tutors.

Get into Music: Introductory Programmes

Key Partners: Kerry ETB, Kerry County Council, Musicians / Tutors

Suggested Funding Model: 50% KLMEP / 50% School (e.g. Fee Charges / DEIS / JCP / School Completion Fund)

Quality Assurance: Tutors selected and vetted as per Kerry ETB HR procedures; Post-programme evaluations

Participation Reach:

Timeframe	Target Regions	Target Number
Year 1	Tralee, Castleisland, Listowel	240
Year 2	Tralee, Castleisland, Listowel, Killorglin, Dingle	400
Year 3	Tralee, Castleisland, Listowel, Killorglin, Dingle, Caherciveen, Kenmare	560

- Introductory access music courses will be delivered in school environments through 'whole class' or small group participation. The programme targets primary school children (aged 7+) and post-primary junior cycle / transition year students (aged 13-16). The aim of the introductory access programme will be to engage children and young people in performance, composition and creativity and support and add value to areas of learning in school environments e.g. as a support to vocal or instrumental performance or the new student Wellbeing programme. Programme durations would vary depending on the needs and requirements of the school.

Ages 7-12	Ages 13-16
Introduction to instruments (e.g. percussion, keys, guitar / stringed instruments, music technology)	Introduction to instruments (e.g. drum / percussion, keys, guitar / stringed instruments, music technology)
Playing and creating basic rhythms and melodies	Trying out instruments and technology
Singing	Song-writing and composition
Performing	Performing and recording

TrY Music! : Introductory Youth Music Programme

Key Partners: Kerry ETB, Kerry County Council, Pobalscoil Chorca Dhuibhne, KDYS, the Institute of Technology, Tralee, Ealain na Gaeltachta, Musicians / Tutors

Suggested Funding Model: 80% KLMEP / 20% Participants

Quality Assurance: Tutors selected and vetted as per Kerry ETB HR procedures; on-site KDYS youth workers; Post-programme evaluations

Participation Reach:

Timeframe	Target Regions	Target Number
Year 1	Castleisland, Listowel	40
Year 2	Castleisland, Listowel Caherciveen, Kenmare,	80
Year 3	Castleisland, Listowel Caherciveen, Kenmare, Killorglin, Killarney	120

- An introductory *TrY Music!* access programme for young people (aged 12-17) will be delivered in partnership with Kerry ETB, Kerry County Council and KDYS in various venues around the County. The aim of the introductory access programme will be to introduce young people to instrumentation, music technology, song writing, composition, performance and recording. The programme will be delivered by professional musicians and youth workers over a period of 10-12 weeks. During the sessions, students will learn about instrumentation, experience song writing, create electronic music, record and work as part of a group. Each project will culminate in a final presentation of recorded material in a youth or community setting.

TrY Music! Youth Music Initiative
Basic introduction to pop/rock instruments (e.g. drums, keys, guitar, bass, percussion)
Basic introduction to electronic music and music technology software
Song-writing and composition
Performing music
Recording tracks

c) Vocal and Instrumental Tuition Initiative

Key Partners: Kerry ETB, Musicians / Tutors, Schools of Music

Suggested Funding Model: 50% KLMEP / 50% Other (e.g. families, parents' councils, primary schools, post-primary schools)

Quality Assurance: Tutors selected and vetted as per Kerry ETB HR procedures; Service Level Agreements with private providers; Programme evaluations

Participation Reach:

Timeframe	Target Regions	Target Number
Year 1	Tralee, Castleisland, Listowel	200
Year 2	Tralee, Castleisland, Listowel, Killorglin, Dingle	400
Year 3	Tralee, Castleisland, Listowel, Killorglin, Dingle, Killarney, Caherciveen, Kenmare	700

- A Vocal and Instrumental Tuition Initiative will operate across a number of locations in the County. KLMEP will resource and service tuition hubs through Kerry ETB Schools and Centres and through partnerships with Schools of Music and local arts venues and organisations. Hubs will be rolled out on a phased basis, starting with the regions of most need, as part of a KLMEP rollout plan. The aim of this service is to provide widespread access to affordable, multi-genre, vocal, electronic and instrumental tuition for children and young people throughout the County. Instrument Banks will also be made available for schools and children to access.
- A range of vocal and instrumental lessons will be offered across traditional, classical, popular and electronic music genres. Lessons will take place on a group basis through schools and hubs, with opportunities for children to progress to individual lessons with existing providers and Schools of Music. Opportunities for schools to set up choirs and ensembles will also be facilitated by vocal and instrumental tutors. Schools will be invited to participate in the initiative and KLMEP will work with schools to tailor a service that best suits their needs and which can be met by the resources of KLMEP.

d) Beat Making Academy

Key Partners: Kerry ETB, the Institute of Technology, Tralee, Musicians / Tutors

Suggested Funding Model: 70% KLMEP / 30% Participants

Quality Assurance: Tutors selected and vetted as per Kerry ETB HR procedures; on-site student support; Programme evaluations

Participation Reach:

Timeframe	Target Regions	Target Number
Years 2 & 3	Open to all	80 annually

- Focusing on the learning of electronic music, a Beatmaking Academy will be delivered as a partnership initiative between IT Tralee and Kerry ETB. Delivery will focus on music technology and the creation of electronic music and will be aimed at students approx. 12-17 years. The classes, which will be delivered during the school year, will be led by KLMEP tutors and supported by work placement students from degree programmes at IT Tralee. Venues will include the IT Tralee campus and Kerry ETB schools equipped with music technology labs such as Kerry College of Further Education in Tralee, Colaiste na Riochta in Listowel and Colaiste na Sceilge in Caherciveen.

e) Workshops and Residencies

Workshops

Key Partners: Kerry ETB, Kerry County Council, Performers / Musicians

Suggested Funding Model: 100% KLMEP

Quality Assurance: Musicians will be invited by KEMP to provide workshops and vetted as per Kerry ETB HR procedures; On-site feedback questionnaires

Participation Reach:

Timeframe	Target Regions	Target Number
Years 1-3	Open to all	Year 1: 30 Year 2: 60 Year 3: 90

- The instrumental and vocal tuition service will facilitate the provision of Workshops with renowned local, national and international performers to accommodate exceptional students and those at higher performance levels throughout the county. Musicians with excellent track records in music performance will facilitate the workshops.

Composer-in-Residence

Key Partners: Kerry ETB, Kerry County Council, Composers

Suggested Funding Model: 100% KLMEP

Quality Assurance: Composers-in-Residence will be selected by interview process and vetted as per Kerry ETB HR procedures; On-site feedback questionnaires

Participation Reach:

Timeframe	Target Regions	Target Number
Years 1-3	Open to all	500 annually

- In support of KLMEP, Kerry County Council Arts Office will fund a Composer-in-Residence as part of its annual programming budget. Composers will liaise with KLMEP and contribute to the programme through engaging in composition and performance activities in identified areas of need. The composer will provide opportunities for children to learn about composition and create new material. Local schools and community venues will be used to showcase the composition talents of the students. KLMEP will also work in partnership with Ealaín na Gaeltachta to expand its Irish Singer Residency programme through which all of the local Gaeltacht primary schools can avail of traditional singing classes with a renowned community-based performer.

f) Summer Schools

Key Partners: Kerry ETB, Kerry County Council, KDYS, the Institute of Technology, Tralee, Pobalscoil Chorca Dhuibhne, Ealain na Gaeltachta, Musicians / Tutors

Suggested Funding Model: 80% KLMEP / 20% Participants

Quality Assurance: Tutors selected and vetted as per Kerry ETB HR procedures; Post-programme evaluations

Participation Reach:

Timeframe	Target Regions	Target Number
Years 2 & 3	Open to all	Year 1: 70 Year 2: 90

- A Youth Music Summer School, to be run in partnership with Kerry ETB, KDYS, Kerry County Council and IT Tralee will provide an opportunity for young people aged 10-14 years, to experience instrumental playing, singing, song writing and composition in a fusion of genres including traditional, folk, rock, pop, hip-hop and electronic music, over a week-long programme. Daily sessions will see students receive tuition and mentorship from expert tutors. Students will also write and record new music, participate in ensemble and group work and will be facilitated in participating in an end-of-week performance. In regions where there is interest, follow-on Youth Music Summer Schools targeting 15-17 year olds, will also be considered for future development and delivery.
- With the support of KLMEP partners, the Summer School will rotate around hubs and venues across the County to widen access and opportunities for young people to experience the programme. A Gaeltacht Youth Music Summer School will also run annually with the support of partners Pobalscoil Chorca Dhuibhne and Ealain na Gaeltachta and build on the pilot access Youth Music Project which was delivered through Irish in Dingle in 2017. This will be replicated in the Kerry Iveragh Gaeltacht in 2019.

g) Music Ensembles

Key Partners: Kerry ETB, Kerry County Council, KDYS, Musicians / Tutors, Schools of Music

Suggested Funding Model:

Cor Chiarraí - 100% KLMEP

Youth Band Projects - 80% KLMEP / 20% Participants

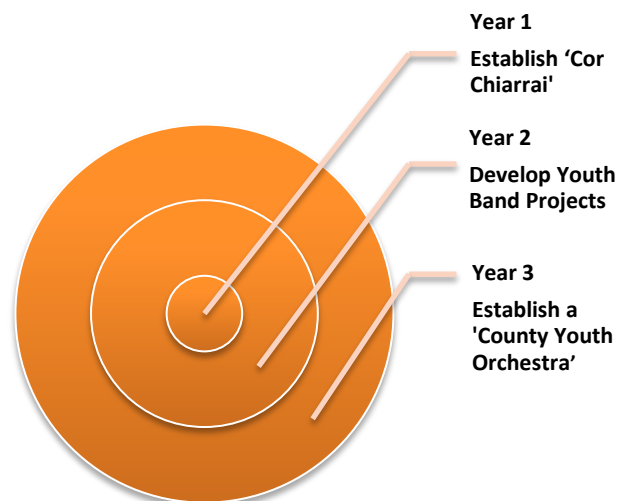
County Orchestra - 100% KLMEP

Quality Assurance: Tutors selected and vetted as per Kerry ETB HR procedures; Orchestral and Choral conductors will be selected and vetted by interview process; Programme evaluations

Participation Reach:

Timeframe	Project	Target Regions	Target Numbers
Year 1	Cór Chiarraí	Open to all	Yr 1: 50 Yr 2: 100 Yr 3: 150
Years 2-3	Youth Band Projects	Year 2: Tralee, Dingle, Castleisland, Listowel Yr 3: Tralee, Dingle, Castleisland, Listowel, Caherciveen, Kenmare	Yr 2: 60 Yr 3: 90
Year 3	County Youth Orchestra	Open to all	Yr 3: 75

- In tandem with the development of a Vocal and Instrumental Tuition Service, Kerry Local Music Education Partnership will expand and develop access to performance opportunities for children through music ensembles. Ensemble opportunities will be provided for children and young people across the County. Participation will represent a progression route for young learners engaged in vocal or instrumental tuition. KLMEP aims to develop 3 specific projects which will be delivered as part of a 3-year strategy to promote ensemble performance for children and young people.



Year 1: Establish 'Cór Chiarrai'

- A multi-genre Children's Chorus will be set up for young singers across the County aged 7-15 years. The Chorus, which will be split into junior and senior sections, will aim to provide vocal and choral experience for children and young people and enable them to develop their skills as performers. The Irish Association of Youth Choirs have signalled that they will support this initiative by providing access to repertoire, advice on choir management, voice production, sight-singing and repertoire selection. Choir rehearsals will also be held regularly in Killorglin.

Year 2: Develop Youth Band Projects

- Presently, Kerry Diocesan Youth Service (KDYS) facilitates a small number of Youth Band Projects for 12-17 year olds which aim to cater for young and aspiring pop/rock musicians or young people interested in music. Currently, youth workers with musical skills co-ordinate the activities of the project on a part-time basis. Students have little access to experienced professional musicians or tutors in areas such as song writing and music technology or music genre expertise in areas such as Dj-ing, hip-hop and electronic music composition. In developing Youth Band Projects, KLMEP will provide an opportunity for young people to progress from the 10-12 week *Try Music!* Pathway programme. Young people will receive mentorship from experienced and professional musicians and be given the opportunity to form bands and perform in local hubs, arts organisations and venues. The initiative will also provide opportunities for young people to develop their individual instrumental or vocal skills through access to tutors on the Vocal and Instrumental Tuition Initiative in their local hub areas.

Year 3: Establish a County Youth Orchestra

- The planned County Orchestra will provide access to instrumental players by audition and will provide a progression and performance opportunity for intermediate to advanced-level students studying music in Co Kerry. Rehearsals will take place in Killorglin on a monthly basis due to its central and accessible location. The National Youth Orchestra of Ireland will support this development through providing access to repertoire, advising the conductor and providing a platform for performance. It is envisaged that this will also serve as a progression path to the NYOI for young Kerry performers.

h) Festivals and Events

Key Partners: Kerry ETB, Kerry County Council, Ealain na Gaeltachta, Local Festival Committees

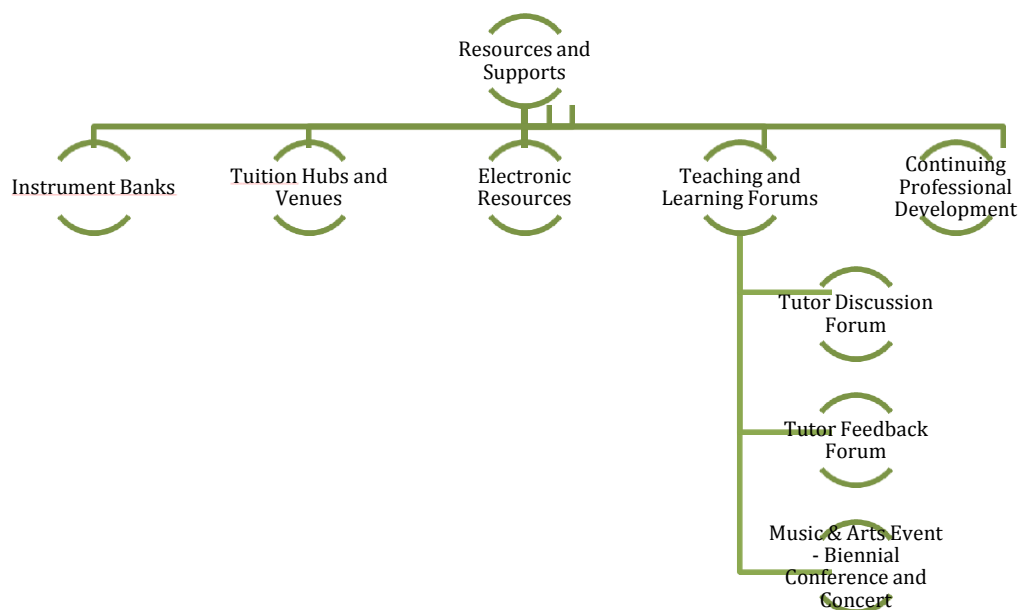
Suggested Funding Model: 100% KLMEP

Quality Assurance: Programme evaluations

Festival and Events

- The prevalence of over 45 local festivals in Co Kerry provides a valuable opportunity to engage young learners in community performance initiatives. It is envisaged that one of the roles of the Programme Co-ordinator will be to develop an annual plan for such performances through liaising with the main festival committees in order to assess performance opportunities for children and young people. A number of small local festivals in hub locations will be targeted in the initial phase of the project and expanded upon thereafter.
- KLMEP will link directly with the Arts Office / Creative Ireland Kerry through 'Cruinniú Na Cásca' to showcase work and reflect on the County's creativity. A strong presence on Culture Night will also bring the work of KLMEP to a wider audience.

Resources and Supports



Instrument Banks

- Seed funding is required to set up an instrument bank to facilitate delivery of KLMEP's planned programmes. Kerry Group have agreed to provide funding to KLMEP for the purchase of instruments and the creation of an Instrument Bank. A bank is required to provide learners with access to instruments through initiatives such as affordable rental schemes. Regional 'instrument drives' will also take place in conjunction with Kerry County Council and local media to source second-hand instruments for use. With the support of Kerry County Library, instruments for rent can also be housed at library locations and lending tracked via the online Kerry County Library catalogue. Small instrument banks will also be housed locally in schools engaged with KLMEP initiatives. KLMEP currently has a small number of keyboard instruments on loan to locations where young people are partaking in *Take Note* Music Pilot Project initiatives.

Tuition Hubs and Venues

- As lead partner, Kerry ETB will provide access to 9 schools as hub locations for the rollout of music education initiatives. Schools are located throughout the County in Tralee (3 schools), Causeway, Listowel, Castleisland, Caherciveen, Killarney and Killorglin. Kerry ETB also has partnership arrangements in place with schools including Pobalscoil Chorca Dhuibhne in Dingle and Pobalscoil Inbhear Sceine in

Kenmare. A variety of buildings are also available across the County for use as performance venues, with many already located in proposed hub locations.

Location	Venues
Tralee	Siamsa Tíre Kerry School of Music
Listowel	St. John's Theatre and Arts Centre Kerry Literary & Culrtural Centre
Killarney	Ireland's National Events Centre (INEC) Killarney Cultural Centre
Dingle	An Lab Beehive Theatre Company An Díseart
Kenmare	Carnegie Arts Centre
Killorglin	CYMS Hall Sol y Sombra (Music venue)
Waterville	Teach Amergin
Scartaglin	Sliabh Luachra Cultural and Heritage Centre
Ballinskelligs	Cill Rialaig Arts Centre

Electronic Resources

- A dedicated electronic resource hub on the KLMEP website will provide access for students to music tools and resources. The hub will also be used to showcase the work of the project through links to performances and recordings made in schools and communities. The music resources of Kerry County Library will also be available for tutors and students to access via a link to the online library catalogue.

Teaching and Learning Forums

- Opportunities for musicians and tutors to collaborate and share best practice will be facilitated through a number of teaching and learning forums, conferences and professional development initiatives.